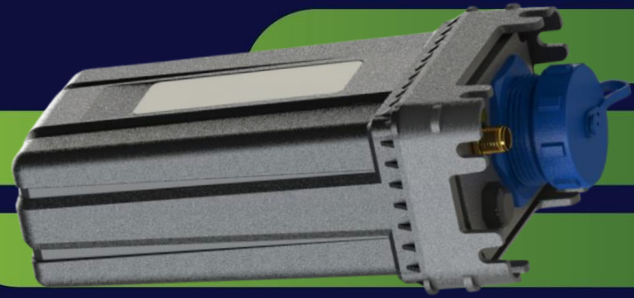




VISIOSOFT

VISIOSOFT PRODUCT SPECIFICATIONS



VISIOHUB: Smart Connectivity Redefined

The VisioHub revolutionizes smart connectivity, offering seamless integration with diverse network infrastructures and flexible power options for uninterrupted operation.

A Smart IO interface allows for seamless integration with other IoT devices, sensors, and systems. This enables advanced data collection, analysis, and control capabilities, further enhancing the utility and versatility of the device.

Unlock the potential of cost effective, efficient and reliable smart communication with the VisioHub.

Address: Unit 8, Tanzanite Crescent,
Stonewood Business Park,
Kraaifontein, 7570

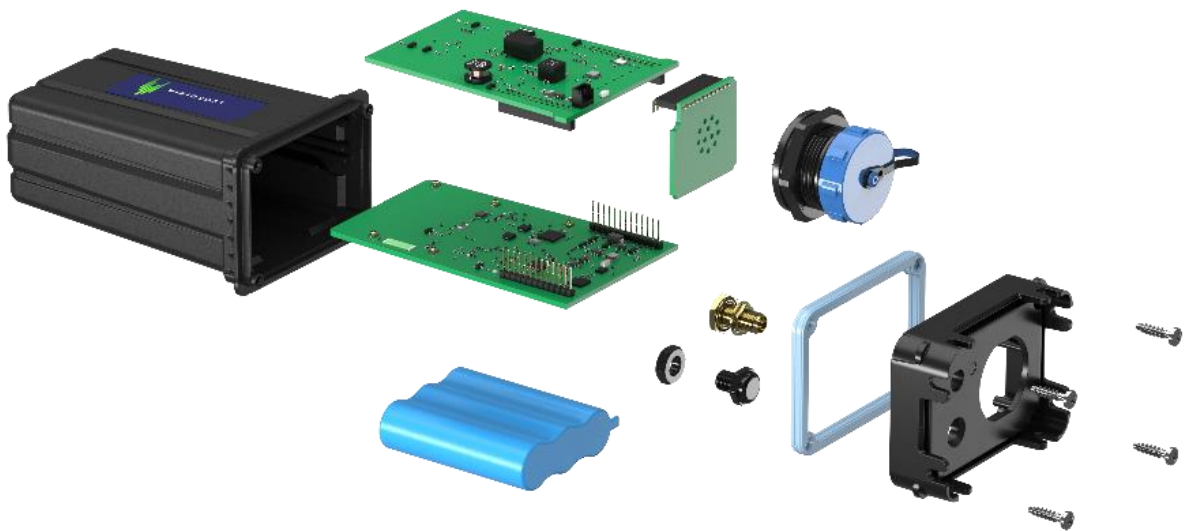
WhatsApp Number: +27 21 137 6608

Website: www.visiosoft.co.za

Landline: +27 21 492 4392



HIGHLIGHTS



Multi Network
Connectivity Support



Multiple Location
Services



Comprehensive Input/Output
and Sensor Support



Flexile Power Options



Easy Data Integration
using VisioConnect



Compact and
Durable Design



CONNECTIVITY

- Cellular : LTE-M / NB-IoT or LTE with 2G fallback

Supported Bands :

- ✓ LTE-M (Cat-M1) : B1, B2, B3, B4, B5, B8, B12, B13, B14, B17, B18, B19, B20, B25, B26, B28, B66
- ✓ NB-IoT (Cat-NB1/NB2) : B1, B2, B3, B4, B5, B8, B12, B13, B17, B19, B20, B25, B26, B28, B66
- ✓ LTE: 1, 2, 3, 4, 5, 7, 8, 12, 20, 28, 38, 40, 41, 66
- ✓ 2G : Quad Band
- ✓ DECT NR+ Ready

SIM Detail : Internal Nano-Sim

- Sigfox : RC1 / RC2 / RC4 / RC6
- LoRa : LoRaWAN 868 and 902-928 MHz
- Wireless M-Bus and Proprietary RF : Options available (Consult with the VisioSoft Team)
- Satellite : Kineis™
- Wi-Fi : 2.4 GHz
- BLE and WirePas™ Ready
- Dynamic NFC/RFID Tag support



LOCATION SERVICE

- GNSS : Low Noise Amplifier Optional
- Wifi 2.4 GHz : MAC Address Sniffing
- BLE : Beacon and Smartphone Integration Support
- Satellite : Satellite-Based Location Service
- Wirepas™ : Meshing Location Service

All Location Services are seamlessly supported through *VisioConnect* Data distribution Gateway

SENSOR OPTIONS

- Onboard Digital Inputs or Outputs : Up to 3 including Pulse Input support on 2
- Onboard Analogue (0 to 3.3V/5V or 4-20mA) Inputs : Up to 3
- Onboard Power Outputs : 3.3V and 5V
- Onboard Relay Output (Max 220VDC, 250VAC 3A) : 1 Channel
- Onboard 3D Accelerometer and Gyroscope
- Onboard Device Tamper Detection
- Onboard pH, ORP, TDS and Temperature Reading Support
- Onboard RTD : PT100, PT1000 and Thermistor
- Onboard RS-485 : Full Duplex with Modbus Support
- Onboard 1-Wire and I2C
- External Digital Temperature and Humidity Probe Support
- External AquaCheck™ Soil Moisture and Temperature Probe Support
- External MaxBotix™ Ultrasonic Sensor Support



POWER AND BATTERIES

- Primary Battery Option : 3.6V 5400mAh (Li-SoCl₂)
- Rechargeable Battery Option : Li-Polymer 4000mAh with Onboard Charger
- External 5V DC Power Input
- Battery Status : Lifetime Status Indicator

MECHANICAL and ENVIRONMENTAL INFORMATION

- Size Dimensions: 115mm x 65mm x 47mm
- Weight : 185 grams
- IP Rating : Rugged IP68 with pressure equalising vent
- Operating Temperature : -30°C to +60°C (extended Temperature options available)
- Mounting Options : Ties, Rivets or Screws

ANTENNAS, CONNECTORS and INDICATORS

- Integrated Antennas with External Antenna Support
- Rugged IP68 Connector with Mating Part
- Front Panel Diagnostics LED

*Please consult with the VisioSoft team for other Connector Support



DEVICE MANAGEMENT AND DATA STORAGE

- Onboard Data Storage : Up to a Month of Data Storage*
- Edge Computing : Optional Computing on the edge with threshold detection
- Device Management : Supported through *VisioConnect* Data distribution Gateway

*Depends on Sensor and Frequency of Data

INTEGRATIONS AND SERVICES

Integrations : *VisioConnect* Data distribution Gateway

SECURITY

Data Security: Data Encryption Supported

CERTIFICATIONS

Please consult with VisioSoft Team on Certification details